



SERVICE BULLETIN

Classification: EC00-024a	Reference: NTB00-070a	Date: March 15, 2001
------------------------------	--------------------------	-------------------------

2000-2001 MAXIMA MIL "ON" WITH DTC P0420 STORED – THREE WAY CATALYST FUNCTION

This amended version of NTB00-070 updates the Applied Vehicles, Service Information, and Service Procedure Sections of the bulletin. Please discard all paper copies of NTB00-070.

APPLIED VEHICLES: 2000-2001 Maxima (A33) - Except 2000 Maximas with Federal Emissions Specification

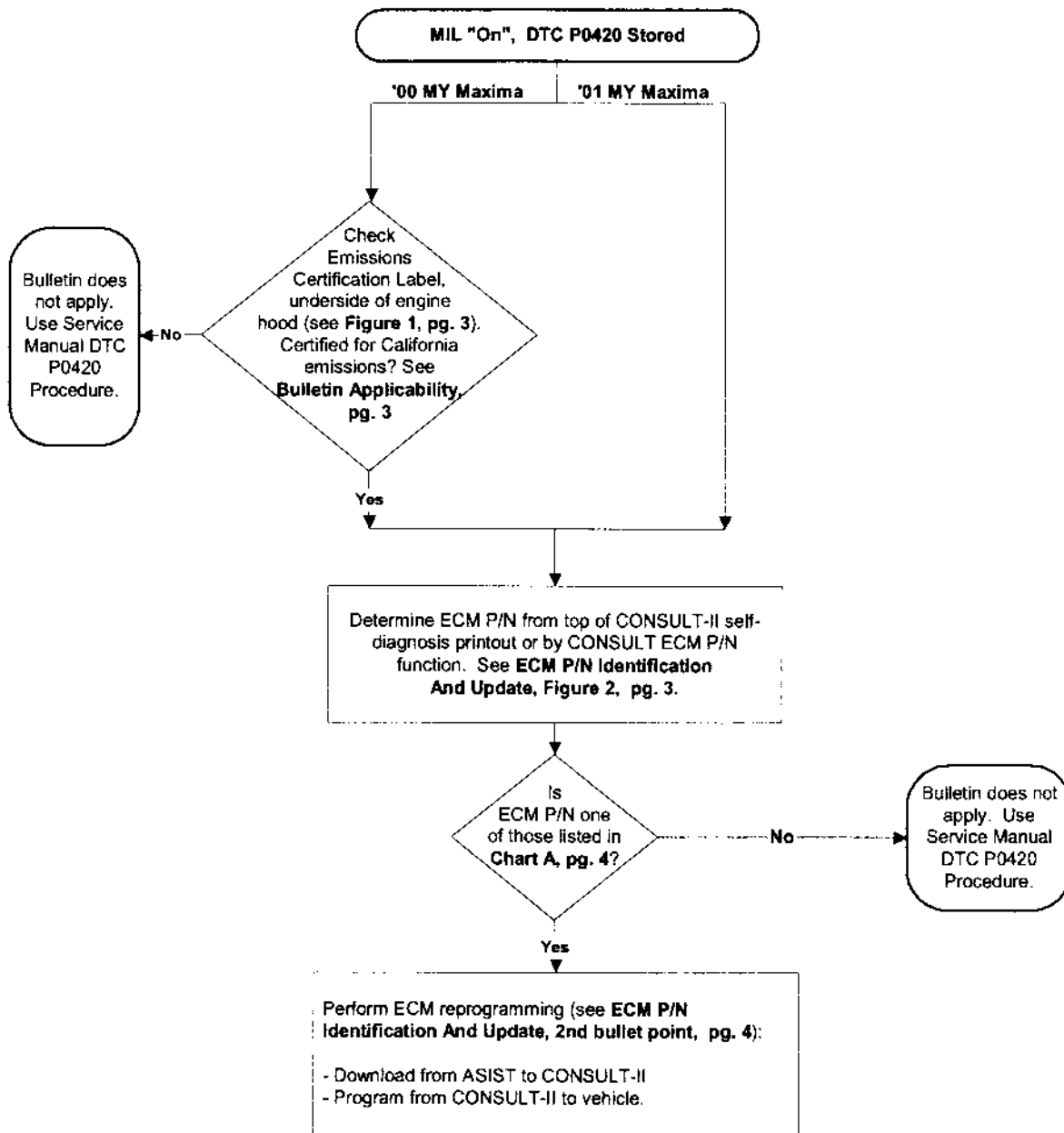
SERVICE INFORMATION

If an applied 2000-2001 Maxima has a MIL "ON" with DTC P0420 (Three Way Catalyst Function) stored in the ECM, it may be the result of an internal ECM Program Misdiagnosis. **The catalyst should not be replaced.** This bulletin provides updated ECM data to reprogram the vehicle's ECM to correct the condition.

This bulletin replaces NTB00-070 which should be discarded as noted above. The ECM reprogram contained in this bulletin is different than the reprogram described in the earlier bulletin. In addition, it is not required to perform the P0420 DTC confirmation test after reprogramming has been removed.

Use the diagnosis/repair flow chart on page 2 and the appropriate Service Procedure steps provided in this bulletin to diagnose and repair this incident, if it should occur, regardless of whether or not the vehicle was previously repaired in accordance with the earlier bulletin.

These are the ONLY approved repair procedures for this incident. If the vehicle falls within this bulletin range, a claim to Nissan for the repair of this incident may be denied if the repairs are not performed exactly as outlined in this bulletin.



SERVICE PROCEDURE

Bulletin Applicability

Determine if this bulletin applies to the vehicle:

1. For **2000 Maxima vehicles**, check the Emissions Certification Label on the underside of the engine hood (see Figure 1). Is the certificate for California emissions?
 - If the certificate is **not** for California emissions, this bulletin does not apply. Use the Service Manual DTC P0420 Procedures to further diagnose and repair.
 - If the certificate is for California emissions, proceed to **ECM Part Number Identification and Update**.

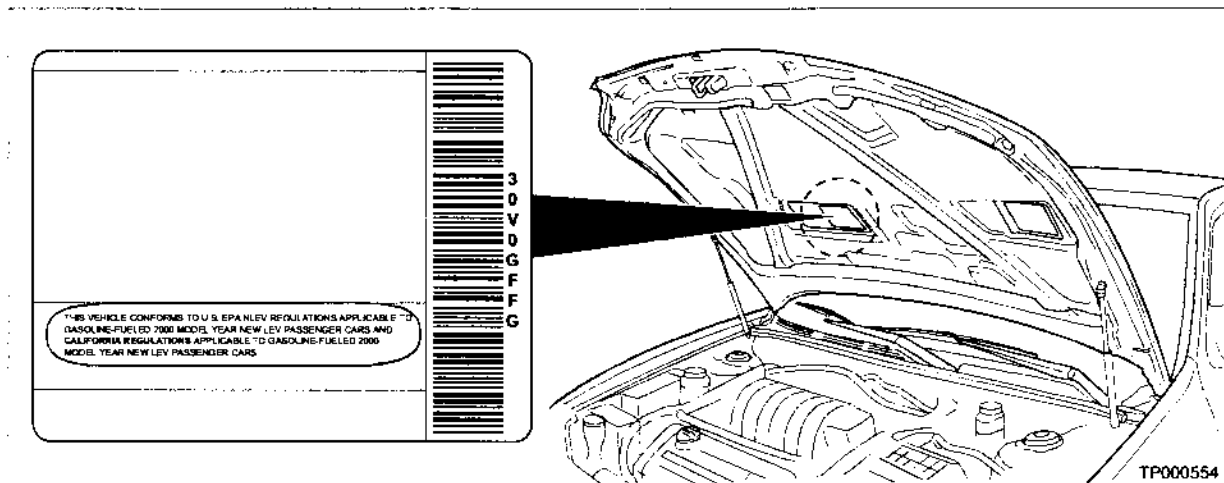


Figure 1

ECM Part Number Identification and Update

1. Determine the vehicle's ECM Part Number. The ECM P/N is found on top of the CONSULT-II self-diagnosis printout (see Figure 2), or by CONSULT ECM P/N Selection.

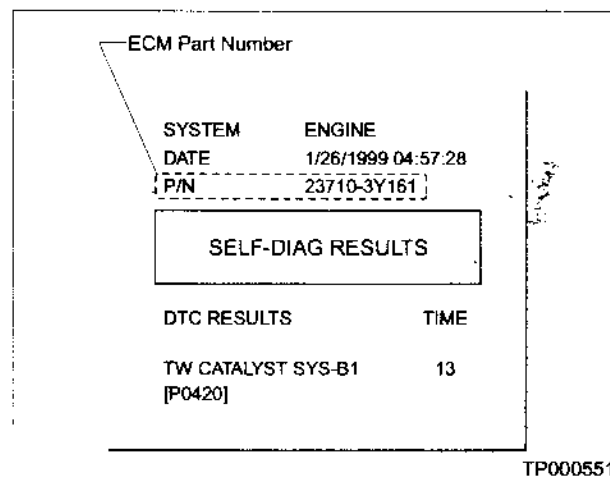


Figure 2

2. Compare the vehicle's ECM P/N to those shown under **Current ECM P/N** in Chart A below:

Chart A – Current ECM P/N's:

Vehicle	Current ECM P/N	New ECM Data P/N
2000, M/T	23710-3Y100, -3Y101, -3Y102, -3Y103, -3Y104, -2Y065	23710-2Y066
2000, M/T w/V-tires *	23710-3Y110, -3Y111, -3Y112, -3Y113, -3Y114, -2Y075	23710-2Y076
2000, A/T	23710-3Y115, -3Y116, -3Y117, -3Y118, -3Y119, -2Y170	23710-2Y171
2000, A/T w/ TCS **	23710-3Y160, -3Y161, -3Y162, -3Y163, -3Y164, -2Y175	23710-2Y176
2001, M/T	23710-4Y900, -4Y901, -4Y902	23710-4Y903
2001, M/T w/V-tires *	23710-4Y910, -4Y911, -4Y912	23710-4Y913
2001, A/T	23710-5Y000, -5Y001, -5Y002	23710-5Y003
2001, A/T w/ TCS **	23710-5Y010, -5Y011, -5Y012	23710-5Y013

NOTE: * V-Tires = V-rated Tires
 ** TCS = Traction Control System

- If the vehicle's ECM P/N **does not match** one of those listed in Chart A, Current ECM P/N column; this bulletin does not apply. Use the Service Manual DTC P0420 Procedures to further diagnose and repair.
- If the vehicle's ECM P/N **does match** one of those listed in Chart A, Current ECM P/N column; perform ECM reprogramming to update the ECM data to the new P/N. ASIST users Click here to link to the "ECM Reprogramming For Nissan Vehicles" general procedure, or refer to Attachment A in the print copy of this bulletin.

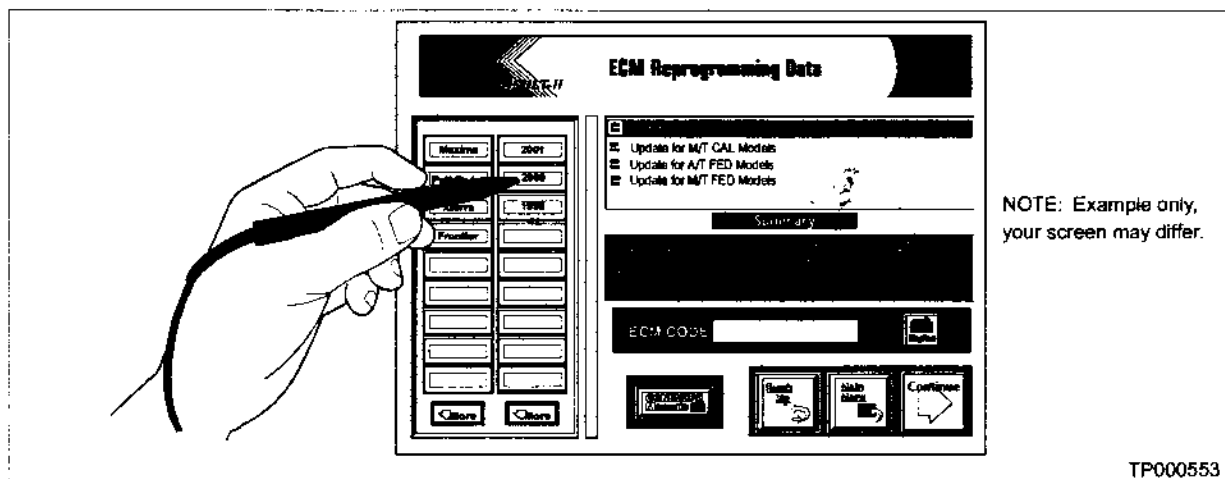


Figure 3

CLAIMS INFORMATION

Submit a Primary Failed Part (PP) line claim using the following claims coding:

DESCRIPTION	PPF	OP CODE	SYM	DIA	FRT
Reprogram ECM and perform CONSULT-II check for DTC P0420 (1)	(2)	DE98AA	HC	32	0.7 hrs.

(1) FRT includes sufficient labor time for diagnosis. DO NOT claim any Section "EE" diagnostic Op Codes for this reprogram operation.

(2) Reference the final CONSULT-II reprogram function print out and use the indicated P/N as the PFP.