



SERVICE BULLETIN

Classification: EL02-009	Reference: NTB02-039	Date: April 3, 2002
-----------------------------	-------------------------	------------------------

2001-2002 NISSAN TACHOMETER NEEDLE ON WRONG SIDE OF STOP PIN

APPLIED VEHICLES: 2001-2002 - All Nissan Vehicles, **Except Quest**

SERVICE INFORMATION

If an Applied Vehicle displays the following symptom:

- The Tachometer Needle is on the wrong side of the stop pin (see Figure 1),

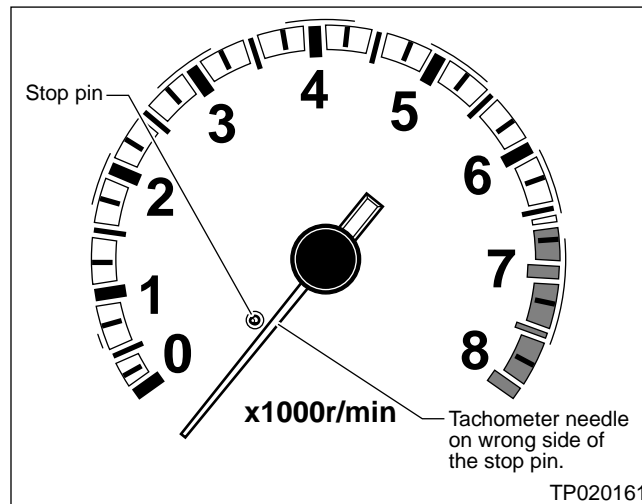


Figure 1

DO NOT replace the Tachometer. The incident can generally only occur if the storage fuse has been removed, and the ignition key is turned OFF while the engine is operating over 4500 RPM.

Therefore, this situation is most likely to occur after the vehicle leaves the factory, but before the dealer performs the Pre-Delivery Inspection (PDI).

Please perform the following System Information Reset Procedure before deciding if any additional repairs are needed.

SYSTEM INFORMATION

1. With the storage fuse installed, put the vehicle in "PARK" or "NEUTRAL."
2. **Carefully** raise the engine RPM briefly to approximately 6000 RPM, until the tachometer needle resets to its normal range of operation. Release the throttle as soon as the tachometer resets.

CAUTION: DO NOT run the engine at this speed for more than 2-3 seconds.